

**K.HARTWALL**

*Logistics Efficiency through Innovation*



We improve  
our customers  
logistics efficiency

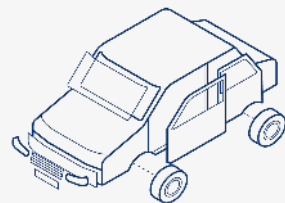
# Our expertise



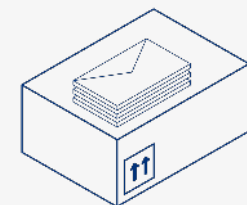
**RETAIL**



**AUTOMOTIVE**



**POSTAL AND PARCEL**



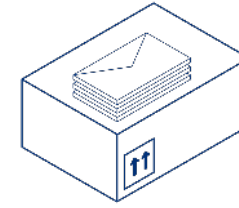
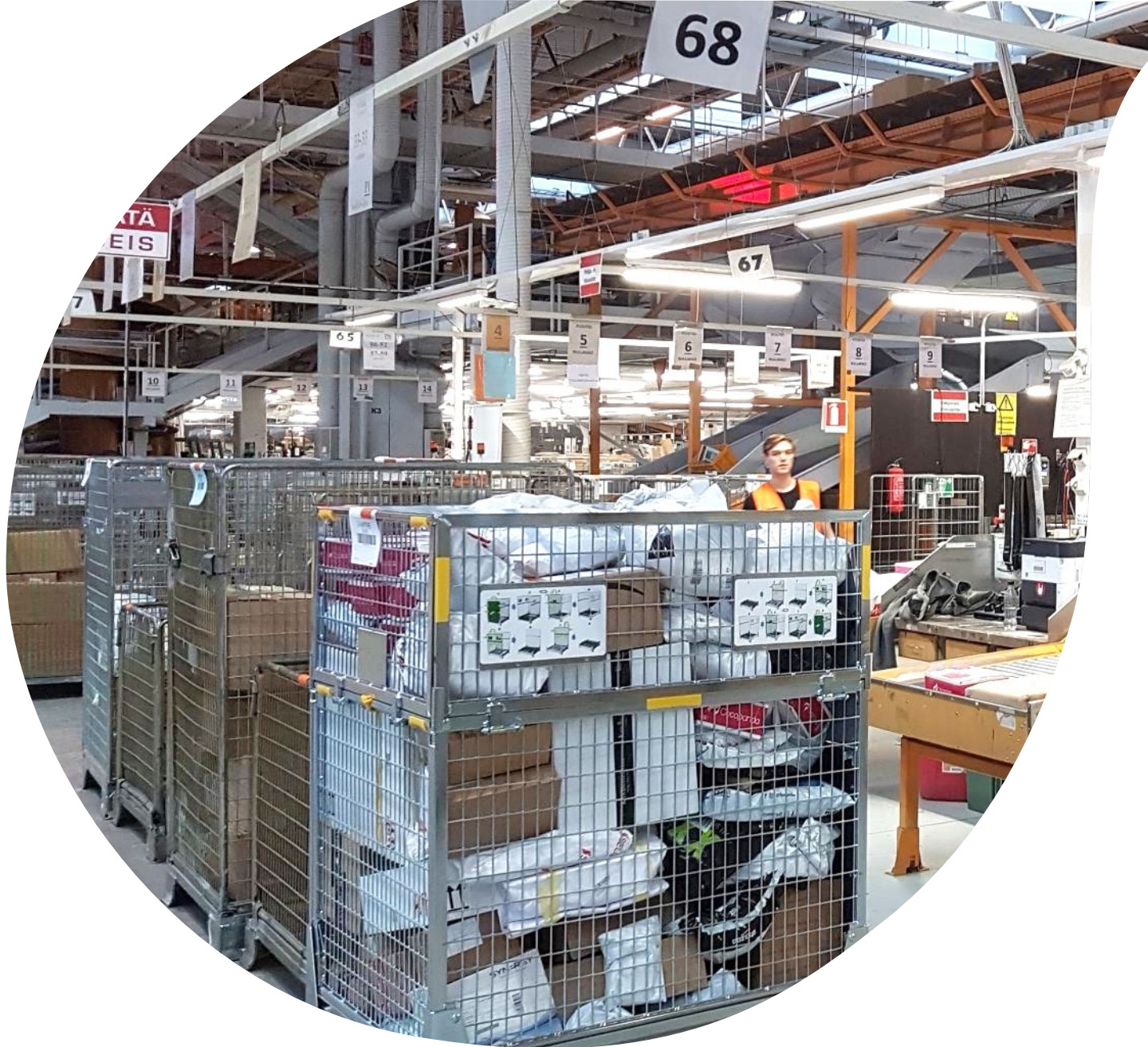


## RETAIL

Reduce manual handling  
and transport costs

Replenish faster

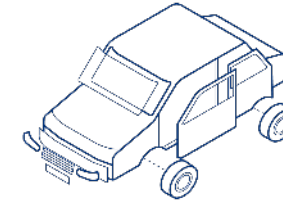




## POSTAL & PARCEL

Gain shorter  
throughput times,  
better vehicle fill  
and handling efficiency

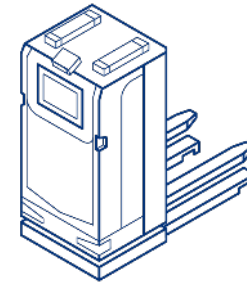




## AUTOMOTIVE

Enjoy smooth,  
forklift-free  
Lean logistics





## AUTOMATION

Automate the movement of your load carriers to maximize efficiency



**BOSCH**

**SCHAEFFLER**



# This is K. Hartwall



Turnover in  
2022

108 M€

Family business  
with a global scope  
since

1932



Customers in more  
than 65 countries



Sales offices  
in 20 countries



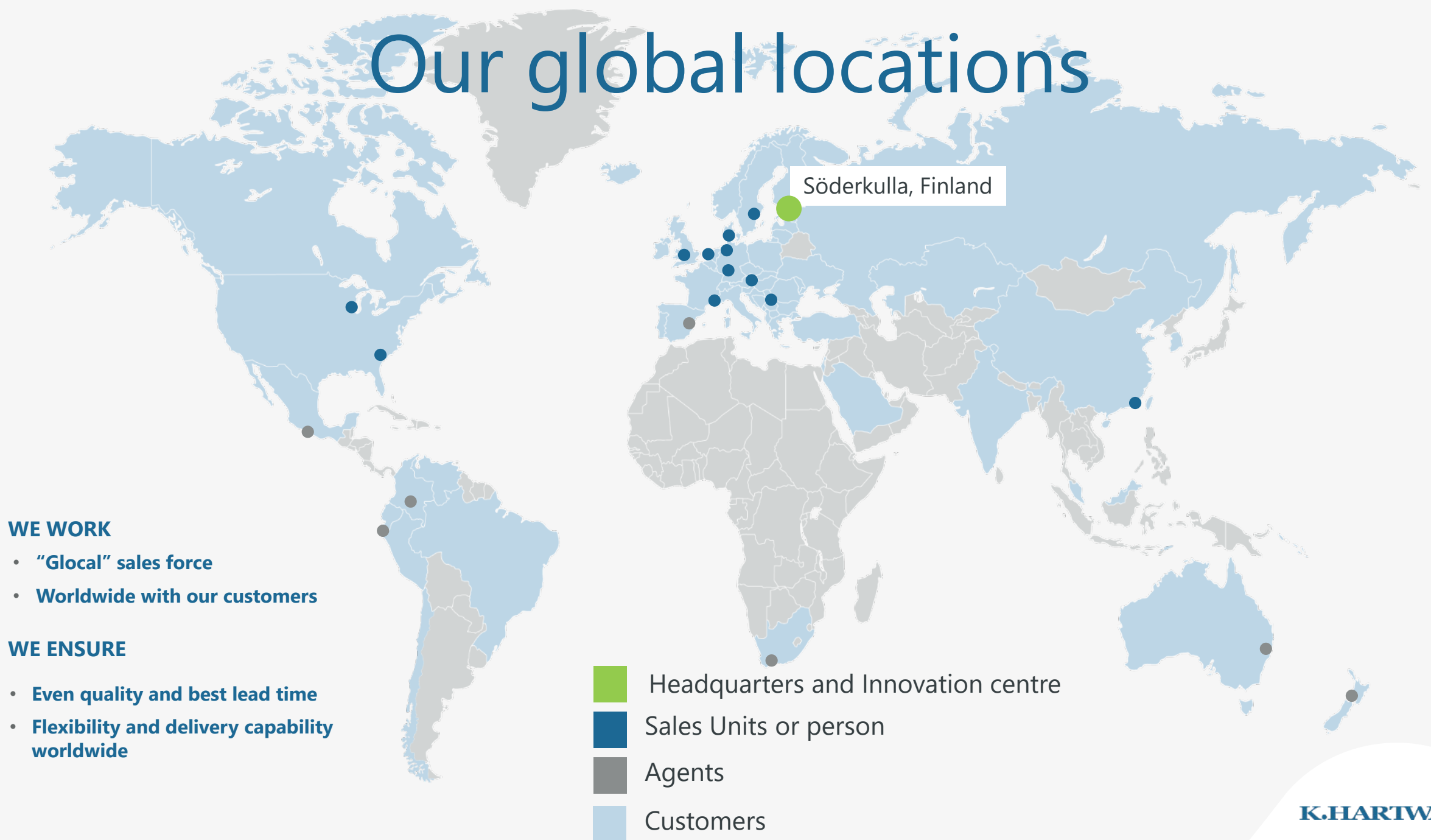
240  
employees



Head office in  
Söderkulla, Finland

Own production,  
assembly and surface  
treatment plant in  
Finland and partnered  
production network in  
Central Europe and Asia

# Our global locations



## WE WORK

- “Glocal” sales force
- Worldwide with our customers

## WE ENSURE

- Even quality and best lead time
- Flexibility and delivery capability worldwide

# Some milestones



1982

## IKEA

K. Hartwall starts a 20 year collaboration with IKEA learning the fundamentals of Lean manufacturing.



1985

## COMPACTAINER

K. Hartwall develops together with ICA the first nesting roll container revolutionising the Retail industry.



1990

## TRAY-DOLLY-PALLET

Together with the Beverage industry K. Hartwall develops the Tray-Dolly-Pallet system.

1997



## IN-HOUSE ELECTRO ZINC-PLATING

The most modern to-date in-house electro zinc plating facility, is inaugurated.

# Some milestones

2020

2006



## LEAN DOLLY & ADAPTOR PALLET

The automotive industry needed an effective logistics solution so we developed the Lean Adaptor Pallet and Dolly solution.



**visimore**<sup>®</sup>

2017

## ASSET TRACKING

Visimore<sup>®</sup>, a truly new way to proactively manage the assets in the supply chain, is launched.

2018



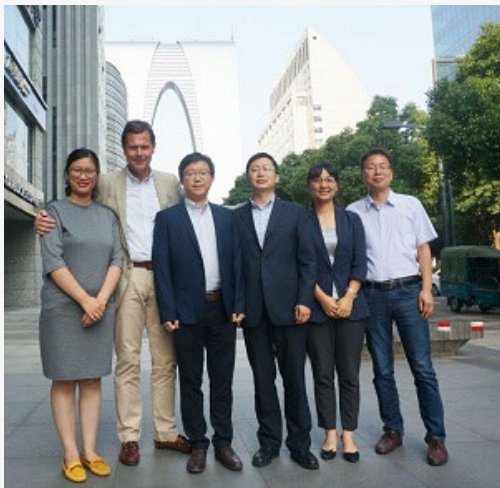
## MAJORITY OWNER OF A&A

K.Hartwall becomes the majority owner of A&A broadening its portfolio with trolley train and mobile robot solutions



## A-MATE IS BORN

K.Hartwall launches a brand-new autonomous mobile robot (AMR) called A-MATE. This is the first fully electric free-lift pallet AGV with omnidirectional drive on the market. A revolution!



# This is us



A reliable partner who understands the trends and listens to your issues



A global player on the load carrier market



An innovative partner who can develop new solutions



A company who provides high quality and durable solutions



A supplier with a large portfolio and worldwide delivery capabilities

# Make the next Smart Move in logistics

## **K. HARTWALL OY AB**

Kay Hartwallin tie 2

01150 Söderkulla, Finland

Tel. +358-9413 1833

[contact-khw@k-hartwall.com](mailto:contact-khw@k-hartwall.com)

