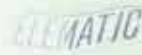
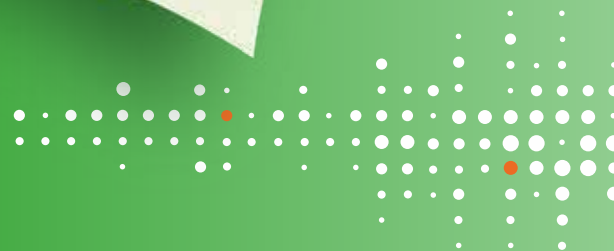



The logo consists of the word "ELEMATIC" in a bold, sans-serif font, enclosed within a white, three-dimensional rectangular frame that appears to be floating or attached to the machinery.The logo is printed in a dark blue color on the side of a large, bright green industrial machine component.The logo is printed in a dark blue color on the side of a white safety helmet.The logo features the word "ELEMATIC" in a bold, white, sans-serif font, positioned to the right of a vertical orange bar.

the future of precast

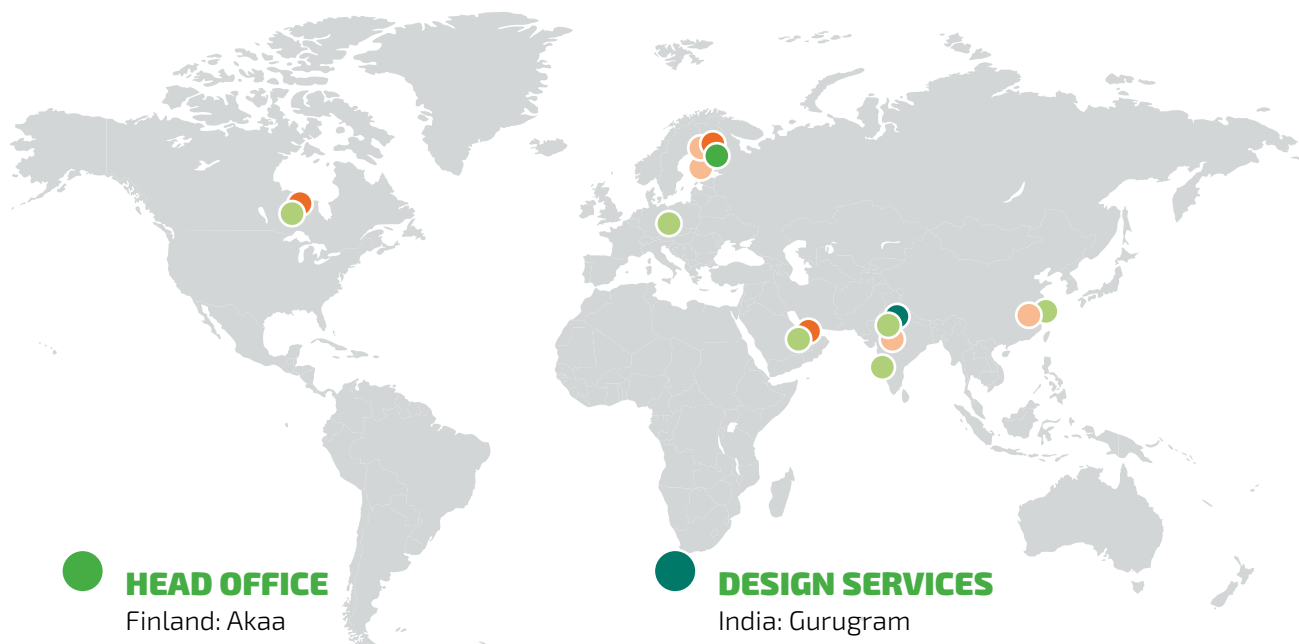


ELEMATIC

in brief



Elematic is known for green quality. We work with care and precision from the beginning – and throughout your factory's lifetime. Our solutions help you meet the needs of your customers and build safe buildings.



HEAD OFFICE

Finland: Akaa



PRODUCTION UNITS

Finland: Riihimäki and Akaa

India: Alwar

China: Changzhou



CUSTOMER SERVICE CENTERS

Finland: Akaa

UAE: Dubai

USA: Brookfield



DESIGN SERVICES

India: Gurugram



SUBSIDIARIES AND SALES OFFICES

USA: Brookfield

Germany: Frankfurt Am Main

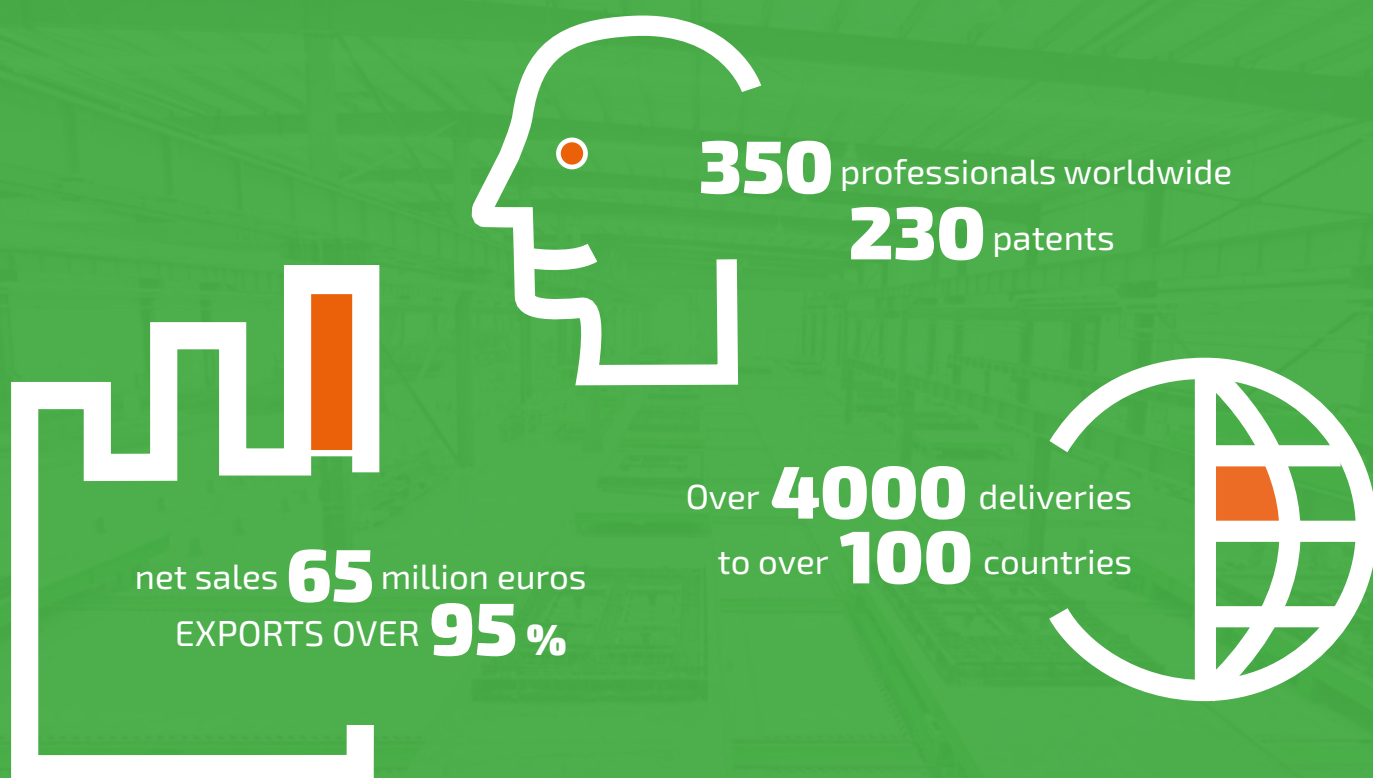
UAE: Dubai

India: New Delhi and Pune

China: Shanghai

REPRESENTATIVES

In over 50 countries



What is **PRECAST?**

Precast is one of the fastest, most profitable, sustainable, and cost-effective ways to build. It is an industrialized method of design, production, and construction using precast concrete products.



Sports arena and apartment, Tampere, FINLAND



Office, Hyderabad, INDIA

Villas Dubai, UAE



Elematic precast technology has enabled hundreds of thousands of building projects in over 100 countries. That's millions of people living in safe homes that withstand decade after decade.



Apartment, Vantaa, FINLAND



School, DUBAI, UAE

Suitable for **ANY BUILDING, ANYWHERE**

You can apply precast products in all building types: residential, commercial, industrial, logistics, and public, to name a few. Beautiful and durable, low and high-rise precast buildings have risen in cold and hot climate areas and zones of high seismic risks.

A building can be a full precast or partial precast building depending on the local construction conditions, requirements, and resources. Precast can be the only building material or utilized as a composite structure combined with steel or wood.

We promise

PROFITABLE PRECAST



Trust can be earned only by giving realistic promises that can be kept. Trust is the only way to create true win-win relationships in the industry we are operating in. Profitable precast is our promise to you. This we can achieve together.





Lowest operational costs

High-quality production lines are optimized to supply you with the lowest operational costs. When you begin building your factory, our experts will help you find the most efficient factory layout for your production. Project and installation professionals will see to it that you will not waste money on unnecessary delays and that your factory will be up and running as scheduled. The individual machines on the line are designed to be raw material efficient, fast, easy-to-use, and durable – and to work together in perfect concert. Automation and software are carefully designed for the needs of precast production.



Best end products

We want you to be proud of the products you supply to your customers. This is why we offer you advanced, patented, and high-quality technologies for the different kinds of end products that guarantee the best possible result. For example, shear compaction in Elematic extruders guarantees the best possible compaction result for hollow-core slabs, the FaMe lightweight shuttering system makes it quick and easy to create precise shutterings for wall elements, and tables and beds are made of sturdy steel with high load-bearing capacities, completely even surfaces, and exact measurements.



Lifetime commitment

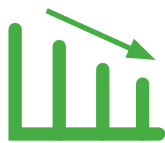
We stand by you at every step of your precast production and help you find the smartest match for your needs – from the initial definition of precast investment to precast production renewal. Our experienced experts guide you from precast concept design and structural building and plant design to machinery optimization, maintenance, and renewal. We offer machine training and production process training at your site or remotely. The training can be customized to your factory's specific needs.

The future **RUNS GREEN**

Many people in the precast industry describe Elematic equipment with two words: Green quality. The equipment is green not only by color but also by nature. We have always aimed for material and energy efficiency when developing precast production technology.

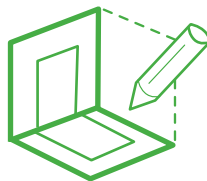
More sustainable production starts from the moment you choose precast. With the help of our equipment and experts, you can make your processes more energy and resource efficient, which benefits business and the environment.

If the future could choose, it would run greener precast processes with green equipment.



METHOD SELECTION

Precast requires less cement, water, and steel compared to cast-in-situ.



DESIGN

Precast ensures material efficiency, e.g., prestressed hollow core slabs save concrete and rebar, and sandwich wall panels provide efficient thermal insulation to buildings.

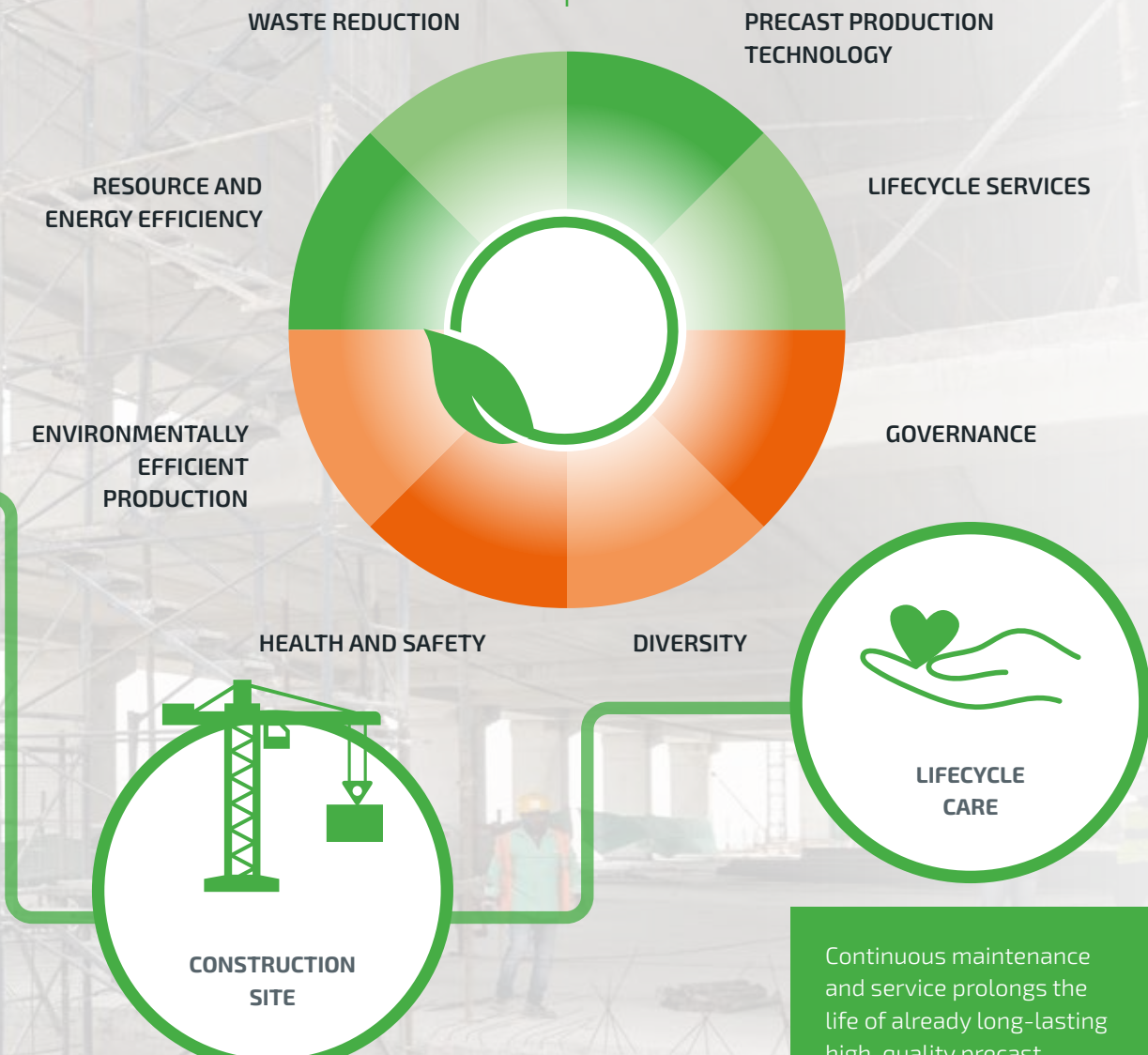


PRODUCTION

Efficient shear compaction in hollow core production saves concrete and cement. Fully automatic concrete recycling during hollow core production reduces CO² emissions. A digital plant control system helps to optimize the use of resources in production. In wall production, aluminum side profiles decrease the amount of waste wood. Modern precast factories also conserve and recycle water.

SUSTAINABILITY AT ELEMATIC

We strive to make the precast industry more sustainable by offering resource and energy-efficient precast technology that is safe to use. Services extend the lifetime of the machines and increase their efficiency. In our own operations, we act responsibly in terms of the environment, people, and the economy. Elematic in Finland has received an ISO 14001 certification for environmental management and an ISO 9001 quality certification.



Using precast makes the site a safer place to work. Precast requires less traffic and fewer support structures, and there's also less dust and noise at the site when compared to cast-in-situ.

Continuous maintenance and service prolongs the life of already long-lasting high-quality precast machinery. Recycling of used precast slabs and leftover concrete also saves resources. A carbon footprint evaluation calculates the greenhouse gas emissions caused by the precast production and helps find ways to decrease them.

PIONEERS

of precast



In the 1950s, a universal need arose in Finland – Elematic's home base – for manufacturing different types of building products efficiently. This was a strong base on which we founded Elematic in 1959.

Every day since, we have built our business on innovations. And your needs are the number one fuel for innovation. To meet your needs and exceed expectations, we've developed pioneering precast production lines and equipment, offered lifecycle services, and refined manufacturing processes. Let us know your needs, we listen.

At the same time, we follow the beat of the industry closely – what is happening today and what tomorrow will hold. As we help to make your processes and equipment more efficient, we make your business beat faster.

Together with you, we create the beat of the industry.



Our aim is to offer you the best service in the industry, throughout the entire factory lifetime. **"The Pulse"** on the side of this box symbolizes this target. It is based on a customer interview soundtrack that describes us as: "A partner that holds our hand in every challenge that we face." You can find some comments from our customers below. If you'd like to read in-depth customer stories, please visit our website.



"Elematic was very open to listening to all our needs – dreams even – and trying to accommodate them."

Hilde Flogstad, *Production Director*, Contiga, Norway



"Elematic is a fairly easy partner to co-operate with. They understood what we were looking for right from the start."

Mikko Lahti, *CEO*, Santalan betoni, Finland



"Elematic's team was very supportive and able to make needed adjustments along the way."

Allwyn Ronald Fernandes
Head of Precast Plant Operations, Aurobindo, India



"Sales support and spare parts support have always worked well."

Henrik B. Jensen, *Country Director Dubai Precast*, UAE



"We chose Elematic products because of their innovation in and future focus on design for the end user."

Hagen Harker, *CEO*
Mid-States Concrete Industries, USA

What we **OFFER**

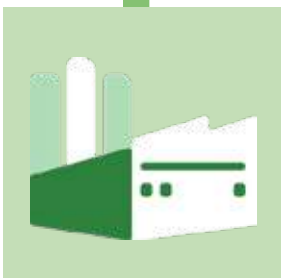
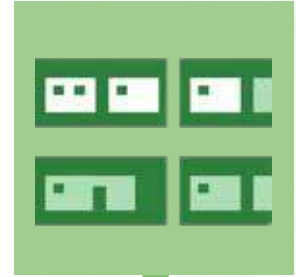
PROJECT
MANAGEMENT



THE BEST WAYS OF
APPLYING PRECAST



PRECAST FACTORY
DESIGN



INSTALLATION AND
COMMISSIONING



MAINTENANCE AND
SUPPORT

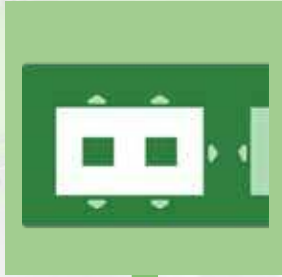


TRAINING

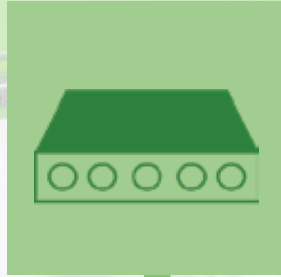


SPARE PARTS

**PRODUCTION
TECHNOLOGY
PLANNING**



**STRUCTURAL
DESIGNS**



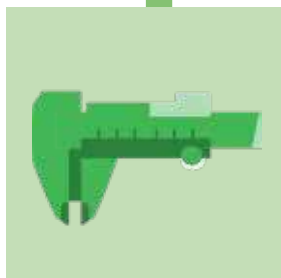
**WE'LL SUPPORT YOU
EVERY STEP OF THE
WAY**

We offer everything from a single machine to a production line and complete precast plants. A comprehensive range of services and technical support are available to you throughout the lifetime of your precast plant. Together we can make sure your production hits its targets.

**FACTORY
DIGITALIZATION**



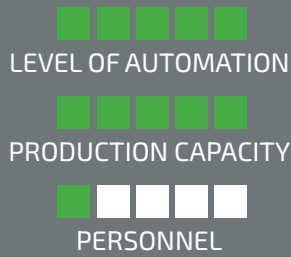
OPTIMIZATION



The right production lines FOR YOUR TARGETS

TECHNOLOGY LEVEL

EDGE



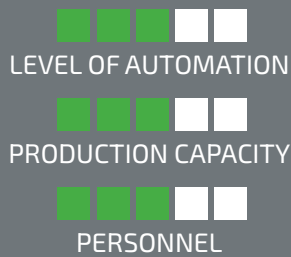
DOUBLE WALL



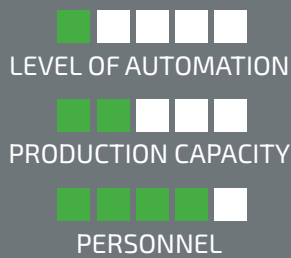
WALL



PRO



SEMI



FOUNDATIONS & FRAMES



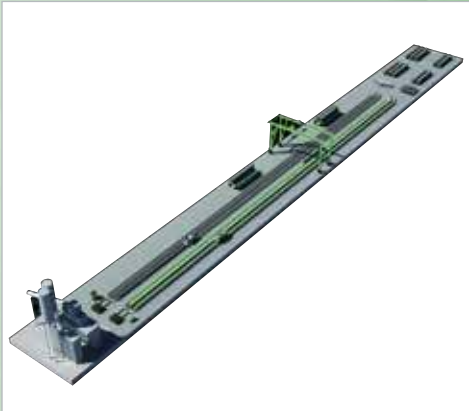
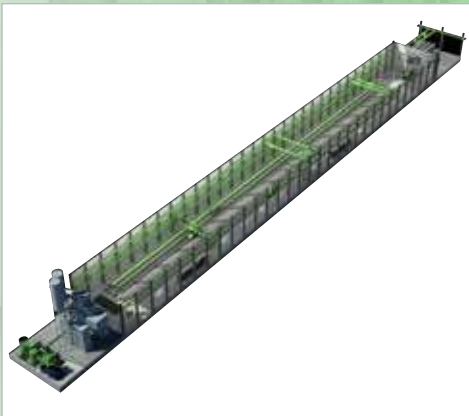
HALF-SLAB LONG LINE



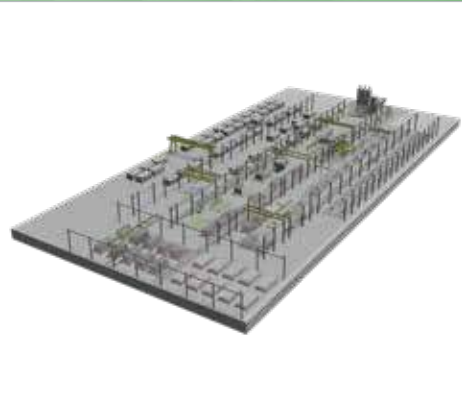
**MORE
information:**



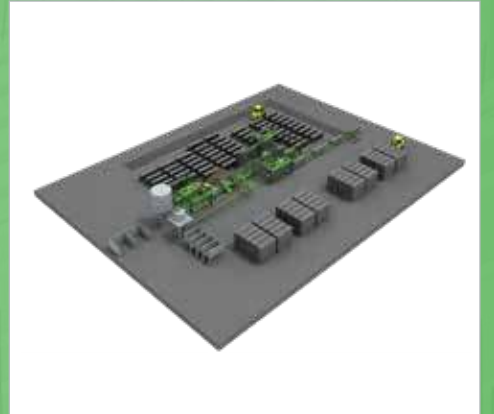
FLOOR



MODULE



ACOTEC PARTITION WALL



MACHINERY

in hollow-core production

MORE
information:



CONCRETE DISTRIBUTION

Distributors and skips



BED PREPARATION

Preparers



PRE-STRESSING

Stressers and abutments



CASTING

Extruders



MODIFYING

Modifiers and plotters



CURING

Maturity control and tarpaulin rollers



CUTTING

Saws and sawpreparers



LIFTING AND WATER HOLE DRILLING

Lifting and drilling beams



SLAB TRANSPORTATION

Transportation wagons

STORING

Storage clamps



CONCRETE PRODUCTION AND TRANSPORTATION

CONCRETE RECYCLING



Batching and mixing plants



Concrete transportation



MACHINERY

in wall production

MORE
information:



TABLES



**MOLDING AND
DE-MOLDING**



CASTING



TRANSFERRING



COMPACTION



SURFACE FINISHING



CURING



LIFTING



CLEANING



TRANSPORTATION



STORING



**FaMe
shuttering
system**



OPTIMIZED production

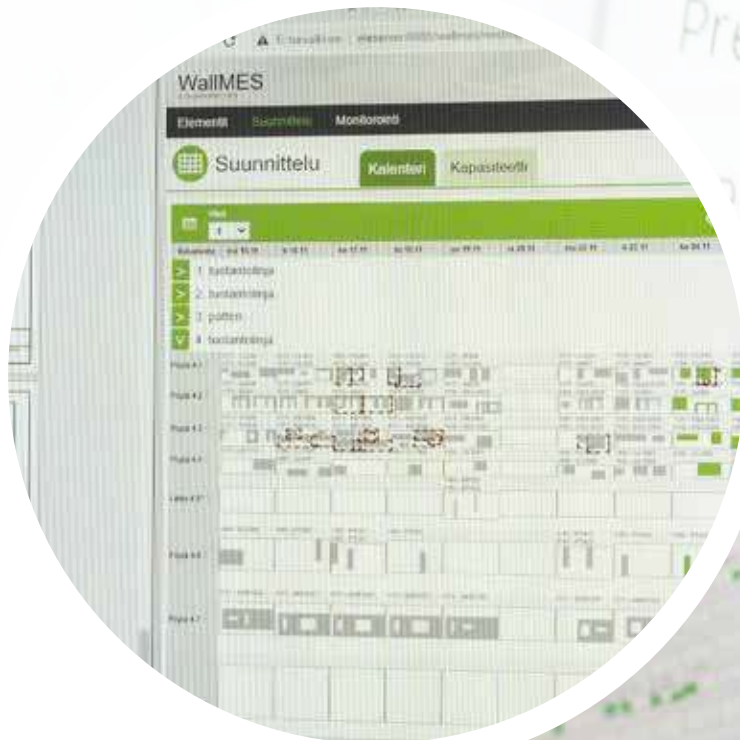
Together we will ensure that both the plant layout and the machinery are optimized for your production needs.

PLANT CONTROL

Precast plants often lack real-time connections between different work processes. By bridging these digitally, you can achieve major improvements in the production efficiency and profitability of your plant.

Plant Control helps to optimize precast production and the use of resources. Elematic Plant Control is a software suite for precast production. It consists of independent modules which enable a step-by-step approach in factory process digitalization.

The system allows for managing, controlling, and optimizing the automatic machines – and the whole production process.



MACHINES

MACHINE

Modifier_e9_

Extruder_e9_

Extruder_e9_

Saw_E9_123

Preparer

stresser

EFFICIENT COLLABORATION

Building information modeling (BIM) is a virtual model of your building or infrastructure project. Elematic offers BIM services to create this model, which the designers, the construction site, and the precast concrete factory can all have access to, and keep updated. **The Elematic Plant Control** system communicates with BIM.

All parties benefit from BIM. Designers can use the system to send their slab and panel design drawings to the precast factory without any manual work if the factory uses Elematic Plant Control. The data is then used for production planning, production management, controlling the automatic machinery, storage operations, and so on at the factory. Element production data can be uploaded to the BIM model for use by the construction site and other parties.

BUILDING DESIGN AND DETAILING

Uses BIM for design work

BIM

PRECAST FACTORY

Element drawings, designs, Element IDs, delivery info

CONSTRUCTION SITE

Designs, drawings, Element IDs, delivery info



PRECISE PROJECT MANAGEMENT

Software, design engineering, and factory projects all require specialized project management expertise. You will have an experienced and dedicated Elematic project manager as your single point of contact for all project-related questions. The project manager keeps in touch with you regularly and helps you throughout your project. S/he helps set a realistic schedule for all the project steps and ensures that the project stays on schedule and meets its goals.



ADOPT PRECAST

as your building technology

We can help you navigate every step of the planning and design processes:

- Choosing the best ways of applying precast
- Designing your precast factory
- Finding the best possible production solution, state-of-the-art equipment, and a digital plant control system for your needs
- Defining future requirements
- Creating structural designs for precast buildings and products



Knowing your demands for precast products, factory capacity and flexibility, level of automation, and investment level, we will consult you in production planning and provide you with a preliminary factory layout proposal and production plan.



CARE. GROW. CREATE.



Based on years of experience with the needs of precast factories around the world, we have created a range of services to support you in your precast operations and to provide you with concrete results: improved profitability, better efficiency, and higher uptime.

EXPERT CARE

We offer continuing expert care to ensure higher uptime. A comprehensive range of services and technical support are available to you throughout the lifetime of your precast plant – from commissioning and maintenance to upgrades and modernization.

TRAINING

We offer machine training, production process training, and safety training which can be customized to your factory's specific needs.

SERVICE AGREEMENTS

The Elematic service agreement protects your equipment investment and increases uptime. The agreement covers helpdesk support, regular maintenance visits, machine and equipment audits, and training.



HELPDESK 24/7

In the case of a sudden or unexpected production problem, the Elematic Helpdesk is your first point of contact. Swift, expert help is available 24/7 in multiple languages to resolve problems via remote access, phone, and email.

SPARE PARTS

Spare part availability is key to keeping a precast factory running smoothly, which is why we have over 3000 spare part items available in stock for fast delivery from three different locations: Finland, the UAE and the USA. It's not just the availability of spare parts, it's also their quality: our OEM wear parts have proved to be the highest performers, with the longest service life.

E-SHOP

The Elematic E-shop is open 24/7, enabling you to review and order high quality Elematic spare and wear parts at your convenience. For high levels of productivity, parts availability matters.

ELEMATIC

the future of precast



THE FUTURE RUNS GREEN

Elematic precast technology has enabled hundreds of thousands of building projects in over 100 countries.

Precast manufactures — our customers — make it possible to build modern buildings resource-efficiently. To meet customer needs and exceed expectations, we've developed pioneering precast equipment, offered lifecycle services and refined manufacturing processes for more than 60 years.

www.elematic.com

Elematic Oyj • Airolantie 2, 37800 Akaa, Finland
Tel. +358 3 549 511 • E-mail marketing@elematic.com



Please visit elematic.com for more information and follow us



Elematic and Acotec are trademarks of Elematic Oyj. Elematic reserves the right to alter specifications without notice. Machines shown in pictures may be equipped with options.

111-0922-EN